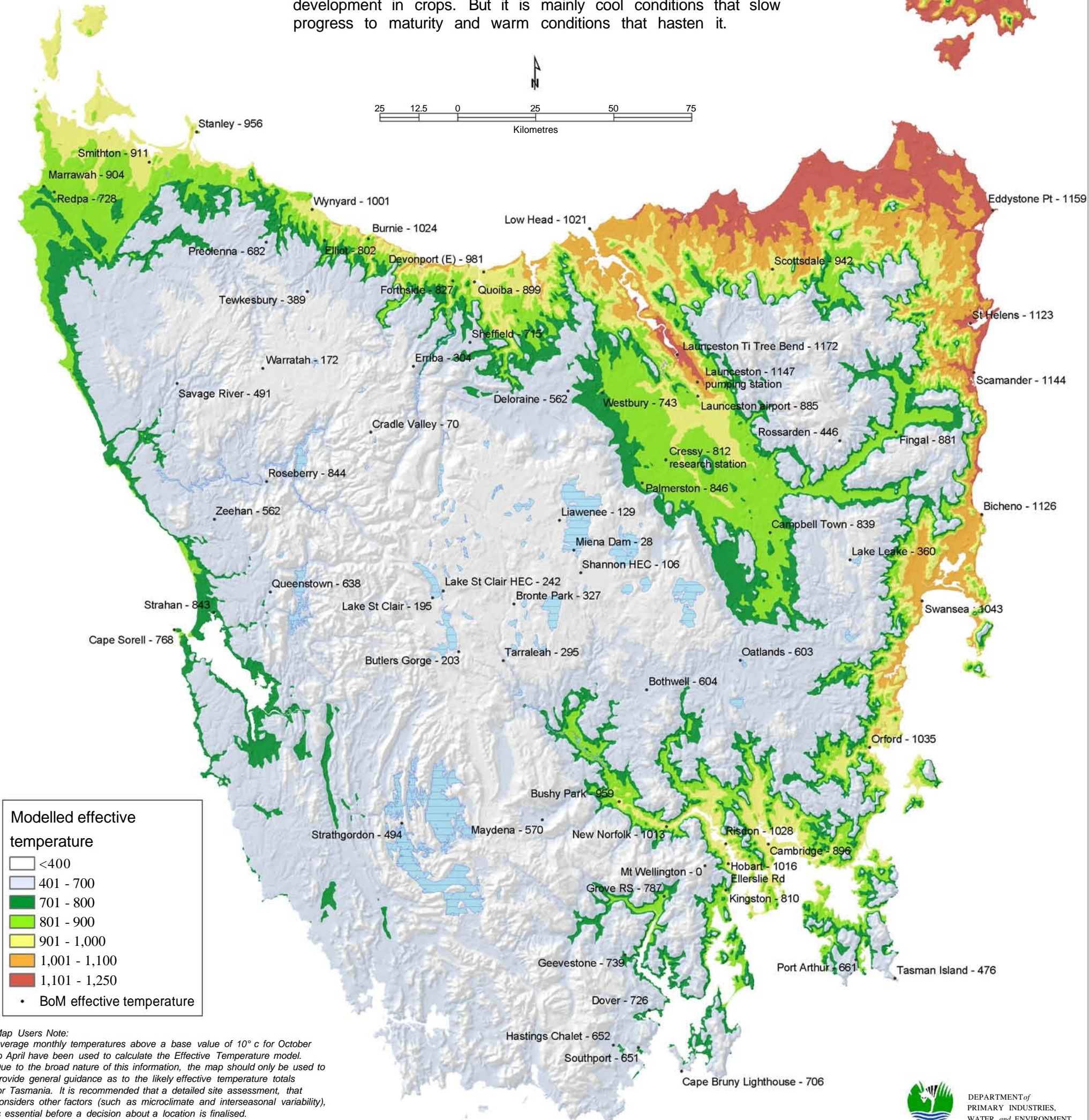
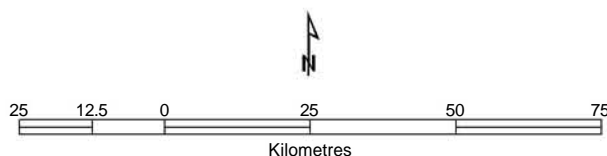
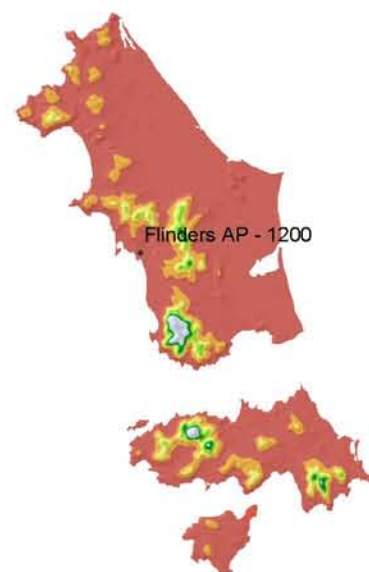
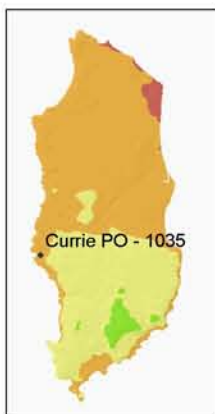


# EFFECTIVE TEMPERATURE FOR OCTOBER TO APRIL

The map depicts total accumulated temperature above a base temperature (10°) for the period from 1 October to 30 April. This map approximates the 'Growing Degree Day' concept by using average monthly temperature instead of actual daily temperature. Also presented are the actual Bureau of Meteorology 'Effective Temperature's' for some stations around Tasmania.

This information may assist in determining possible locations for growing crops using temperature summation. Crops like cool climate grapes, sweet corn and stonefruits typically require a minimum of around 900 units. Other environmental factors such as soil fertility, available soil water and disease also influence the rate of development in crops. But it is mainly cool conditions that slow progress to maturity and warm conditions that hasten it.

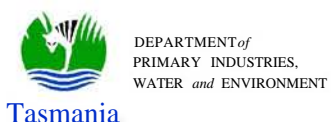


**Modelled effective temperature**

- < 400
- 401 - 700
- 701 - 800
- 801 - 900
- 901 - 1,000
- 1,001 - 1,100
- 1,101 - 1,250
- BoM effective temperature

**Map Users Note:**  
Average monthly temperatures above a base value of 10° c for October to April have been used to calculate the Effective Temperature model. Due to the broad nature of this information, the map should only be used to provide general guidance as to the likely effective temperature totals for Tasmania. It is recommended that a detailed site assessment, that considers other factors (such as microclimate and interseasonal variability), is essential before a decision about a location is finalised.

The map should be used at the published scale and not enlarged.  
Data used: Climate averages for Australian sites, maximum and minimum temperature, Bureau of Meteorology, 2004.  
Model developed using ANUCLIM by S Lynch LMB DPIWE 2004



The Crown in the right of the State of Tasmania does not accept responsibility for any loss or damage which may result to any person arising from reliance on all or any part of this information, whether or not that loss or damage has resulted from negligence or any other cause.